



Stoneacre
Properties

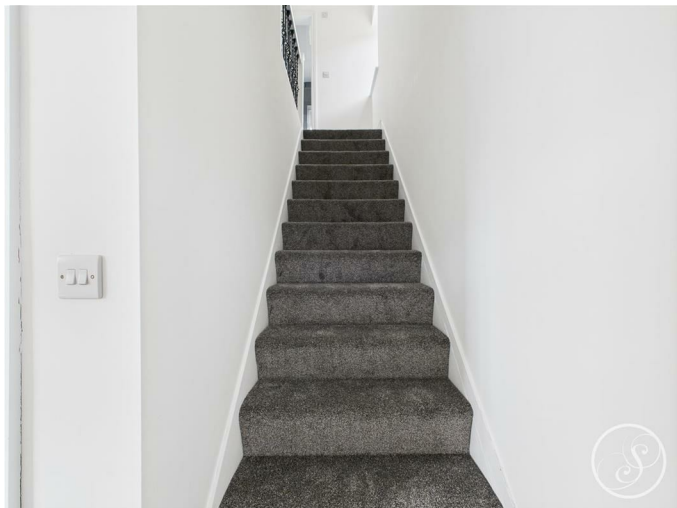


Wilfred Avenue, Leeds, LS15 7SW

£274,000

This semi detached family home has just benefitted from a new boiler and rewire . The property has been skilfully updated to a high standard. Comprising: entrance, lounge, kitchen/diner, three bedrooms and a bathroom. Externally there is also gardens, off street parking and a garage. Wilfred Avenue is a popular street and boasts great access to local amenities including shops, schools and Crossgates train station. This property must be viewed to fully appreciate all is on offer.

ENTRANCE HALL



Door to the front. Central heating radiator.

LOUNGE



Double glazed window to the front elevation. Central heating radiator.

KITCHEN/DINER



Range of modern wall and base units. Integrated fridge/freezer and electric cooker. Induction hob with extractor. Sink and drainer. Double glazed window to the rear. French doors leading to the rear garden. Space for dining room table. Storage cupboard.

FIRST FLOOR LANDING

Double glazed window to the side elevation. Access to the loft.

BEDROOM ONE



Double glazed window to the front. Central heating radiator.

BEDROOM TWO



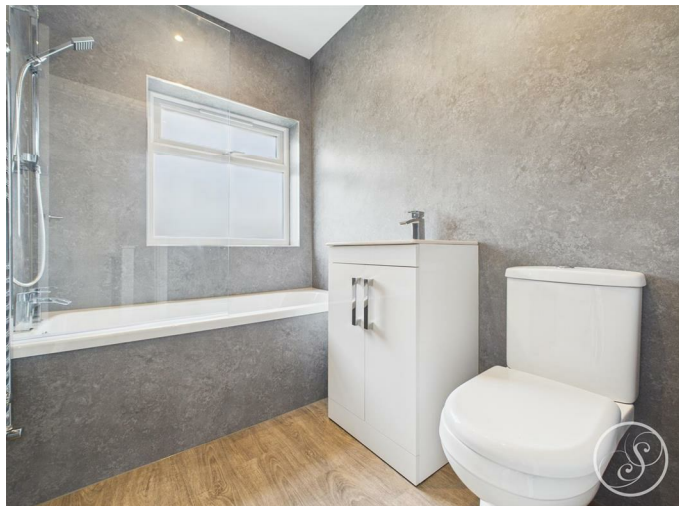
Double glazed window to the rear elevation. Central heating radiator.

BEDROOM THREE



Double glazed window to the front. Central heating radiator.

BATHROOM



Double glazed frosted window. Low flush w.c. Wash hand basin with storage under. Bath with shower above. Heated towel rail.

GARAGE

EXTERNAL

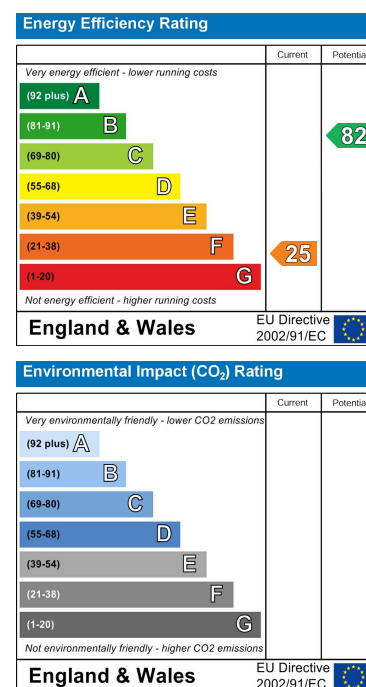
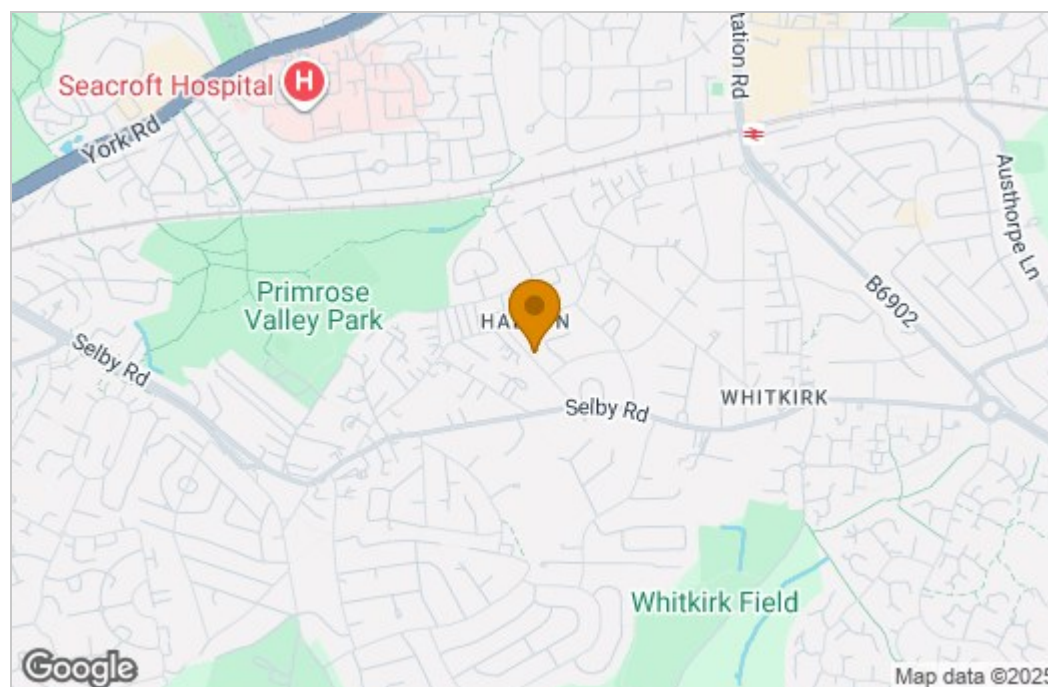


Driveway to the side of the property. Grass laid to lawn to the rear.

Floor Plan



Area Map



These particulars, whilst believed to be accurate are set out as a general outline only for guidance and do not constitute any part of an offer or contract. Intending purchasers should not rely on them as statements of representation of fact, but must satisfy themselves by inspection or otherwise as to their accuracy. No person in this firm's employment has the authority to make or give any representation or warranty in respect of the property.

1 Colton Road, Leeds, West Yorkshire, LS15 9AA
Tel: 0113 260 9111 Email:
east@stoneacreproperties.co.uk <https://www.stoneacreproperties.co.uk>

View properties before they come on the market by following us on Instagram - @stoneacreproperties

